

Pavers



EAST WEST TILES[®]

blocks which stand out

“The paving design of a project has a strong influence on the project’s character, its coherence, and ultimately, on its meaning. A pavement can facilitate connections between the parts of a built environment, and to the person using that space.”



PAVERS

We aim to have history record this EAST WEST TILES team and era as one of the finest periods of advancements in availability of Paving solutions in the country.

With the new product ranges, particularly the Stone Pavers, Flags and Grass Pavers , EAST WEST TILES has endeavoured to put forth a collection which could complete with the finest in the world.

Several design enhancement initiatives undertaken by EAST WEST TILES, go a few extra steps to ensure that our customers are benefitted in ways beyond the simple act of buying a good quality paving material.

INDEX

PAGE NO.

| | | |
|-------------------------------|--|-------|
| HSF | High strength high finish pavers | 02-03 |
| Cobble | Timeless small aspect square paving | 04-05 |
| Square | Paving stone of 200*200mm | 06-07 |
| Brick | Small rectangular shaped paving | 08-09 |
| Flexi Paver | Modules in square & Rectengular shapes | 10-11 |
| Flagstone | Paving stones of 400*400 mm | 12-13 |
| Shot Blasted | Anti skid look & Aging texture | 14-15 |
| Fan cobble | Radial cobble paving | 16 |
| Cobble Shot Blasted | Stone like square paving | 16 |
| Uni Paver | Zig Zag paving stone | 17 |
| Stone Paver | Cobble & Square paving stone | 18-19 |
| Bellezza | Damru, Damru eye, Triple eye & Trident | 20-21 |
| Grass Paver | Environment friendly paving | 22-23 |
| Rough Walk | Grove and Texture tiles for exterior | 24-30 |
| Steps & Riser | Stair case tiles | 30 |
| Etcetera | Additional supplementary products | 31 |
| Manhole & Gully Drain Cover | Drainage products | 32 |
| Kerb Stone | Road dividers | 32 |
| Water Drain System | Drainage products | 33 |
| GRC & FRP Jali | Glass reinforced concrete & Fibrereinforced plastic products | 34 |
| Specification of paver blocks | | 35 |
| Installation guide pavers | | 36-37 |



HIGH STRENGTH HIGH FINISH BLOCKS FOR PAVING

Interlocking Pavers manufactured by EAST WEST TILES offers the brightest colors with finer and deeper texture on the paver face. We provide exceptional finish, luster and strength to our products.



Cobble



Square



Brick



Rectangle



Unipaver





IS-15658



COBBLES

The square concrete cobble stones with clean cut straight lines are like timeless natural cobbles, but a more pragmatic and yet an aesthetic alternative. Beyond a radius of 1 meter square cobbles can be used in radial arrangement as shown on the opposite page.



Cobble
100x100mm

SQUARE



Square pavers are particularly recommended for internal road paving of residential areas, and other landscaped spaces of all real estate developments, where a tough and yet timeless stone finished paving is required.





Square
200x200 mm

Bricks walks, patios and driveways add character, charm and colours permanence no others paving material can match. We aim to provide our customers with the latest textures, colours, shapes and sizes that continually increase the overall enjoyment of this timeless building material.





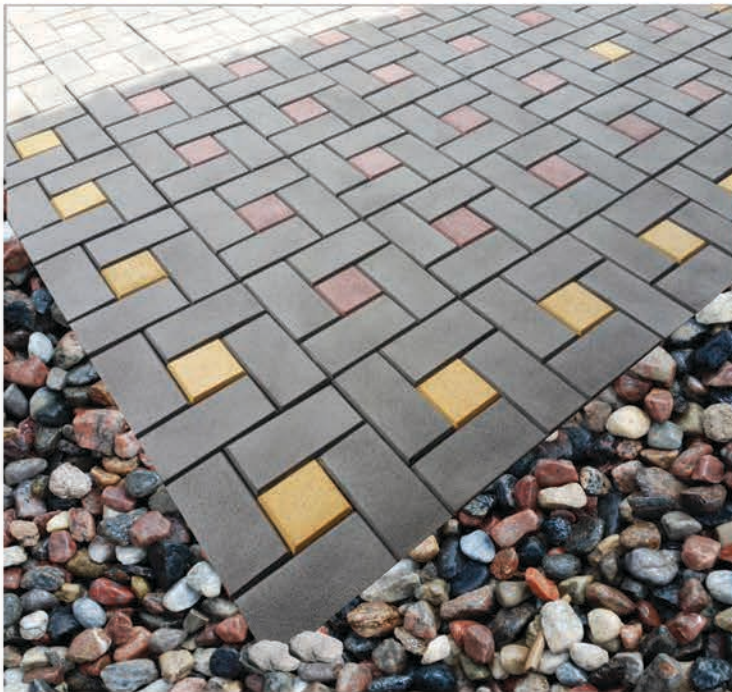
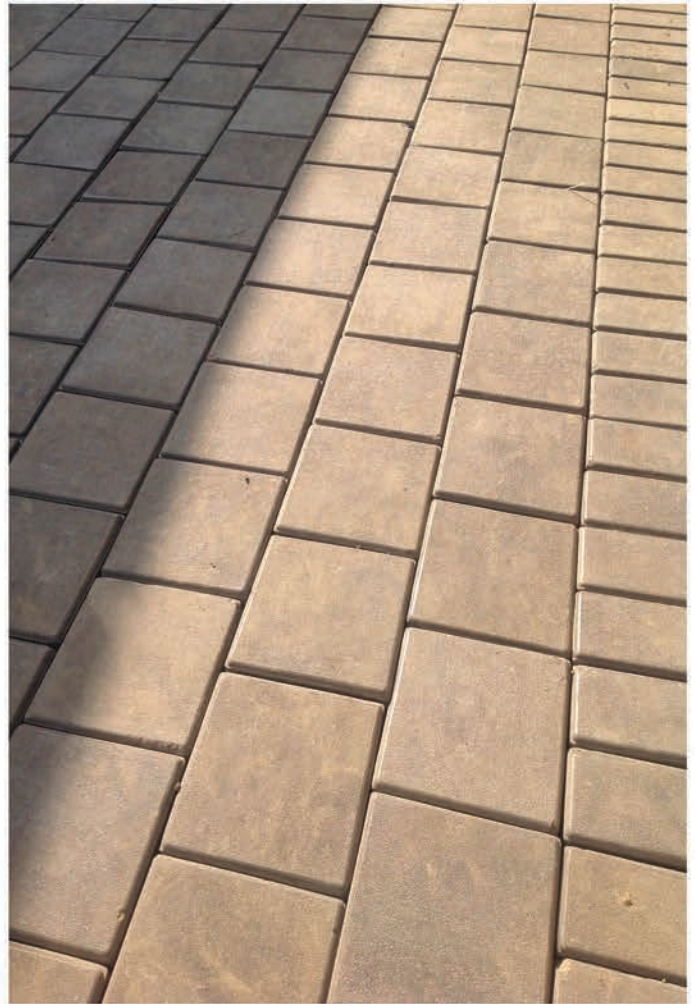
Brick
200x100mm



FLEXI PAVERS



These pavers from EAST WEST TILES offer you the possibility to indulge your creative side. Pavers under this basket can be seamlessly combined in mix of different sizes & colours to create either subtle or strong graphics, as one may desire.



Cobble
100x100x60mm



Square
200x200x60mm

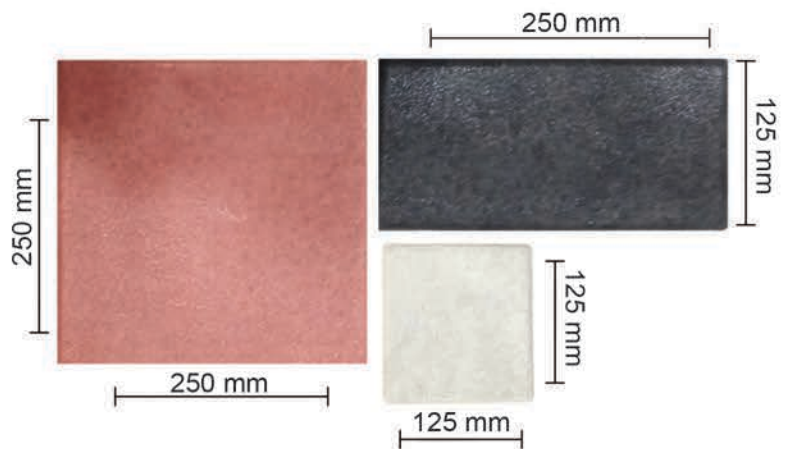
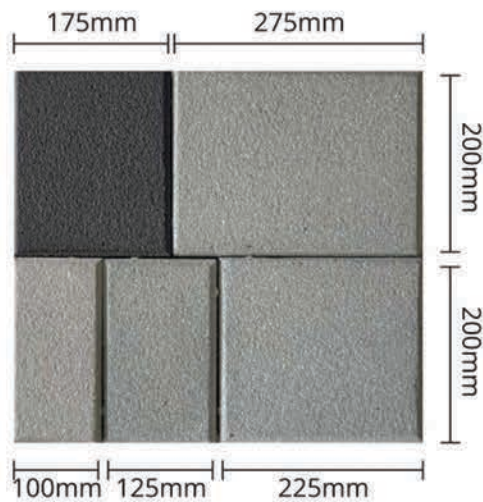
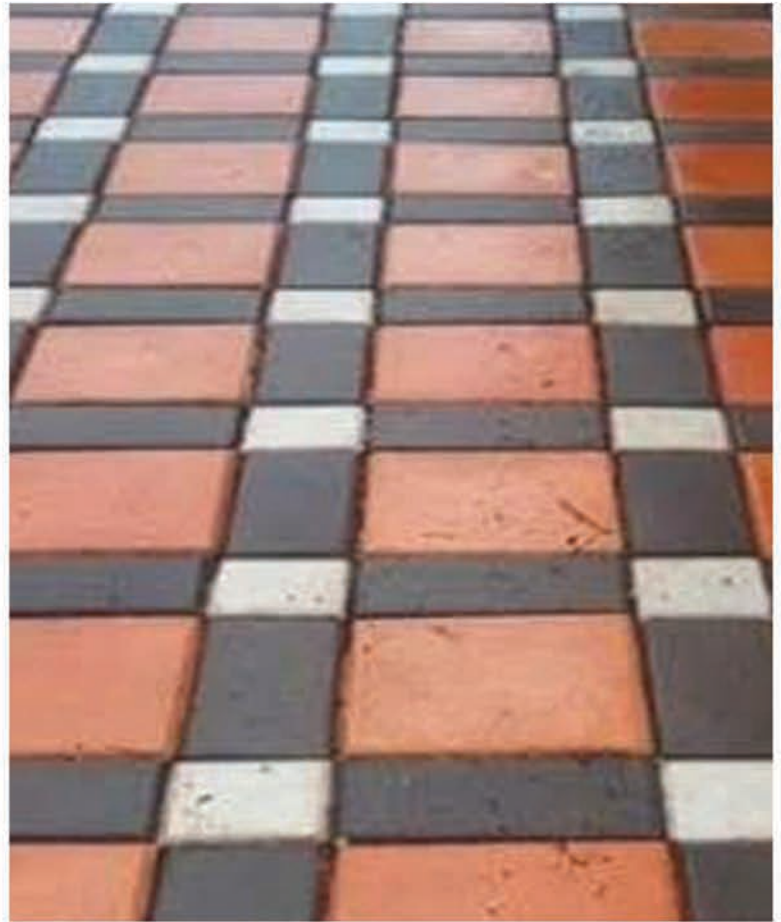


Brick
200x100x60mm



Rectangle
300x200x60mm

COMBI PAVERS



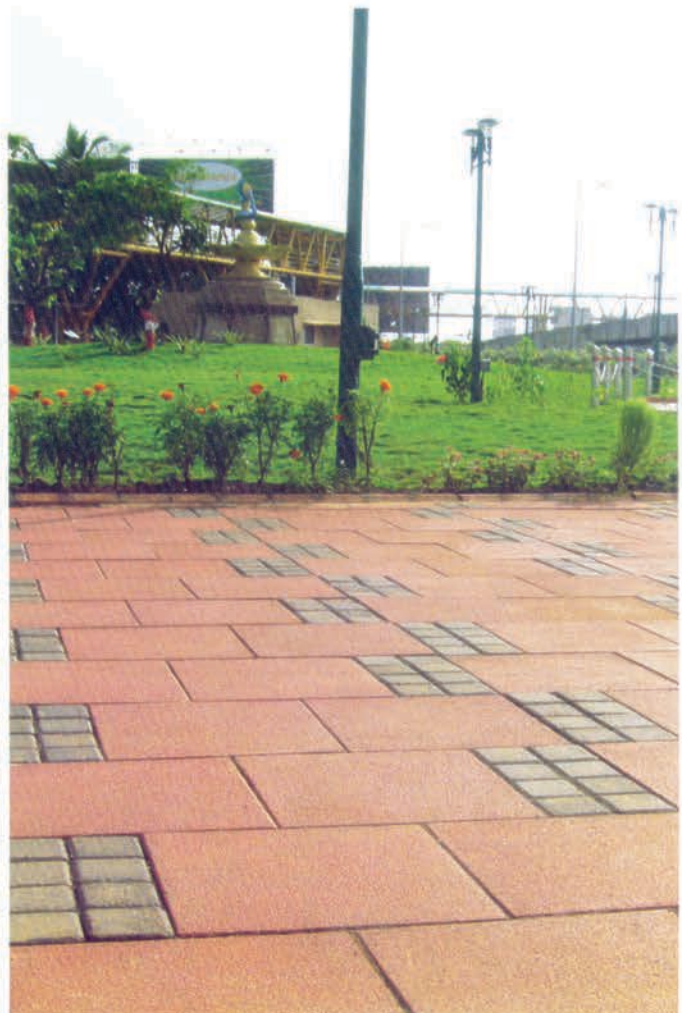
FLAGSTONE



Concrete block pavings in sizes of (400*400)mm are generally referred to as Flagstones or Concrete Flags.

Flagstone paving offers a clean, hard wearing and aesthetically pleasing surface, offering designers the potential to use elements of a larger scale than block paving.

Our seamlessly modular sizes allow flags to be used in conjunction with smaller paving units. This throw up several design options. Some of which are readily available with us.





Applications

Concrete Flag paving provides an attractive surface suitable for

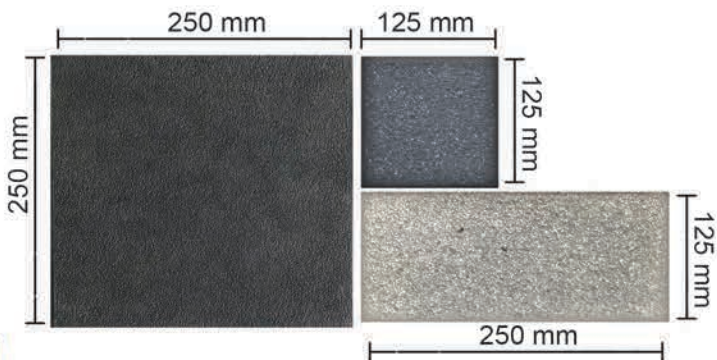
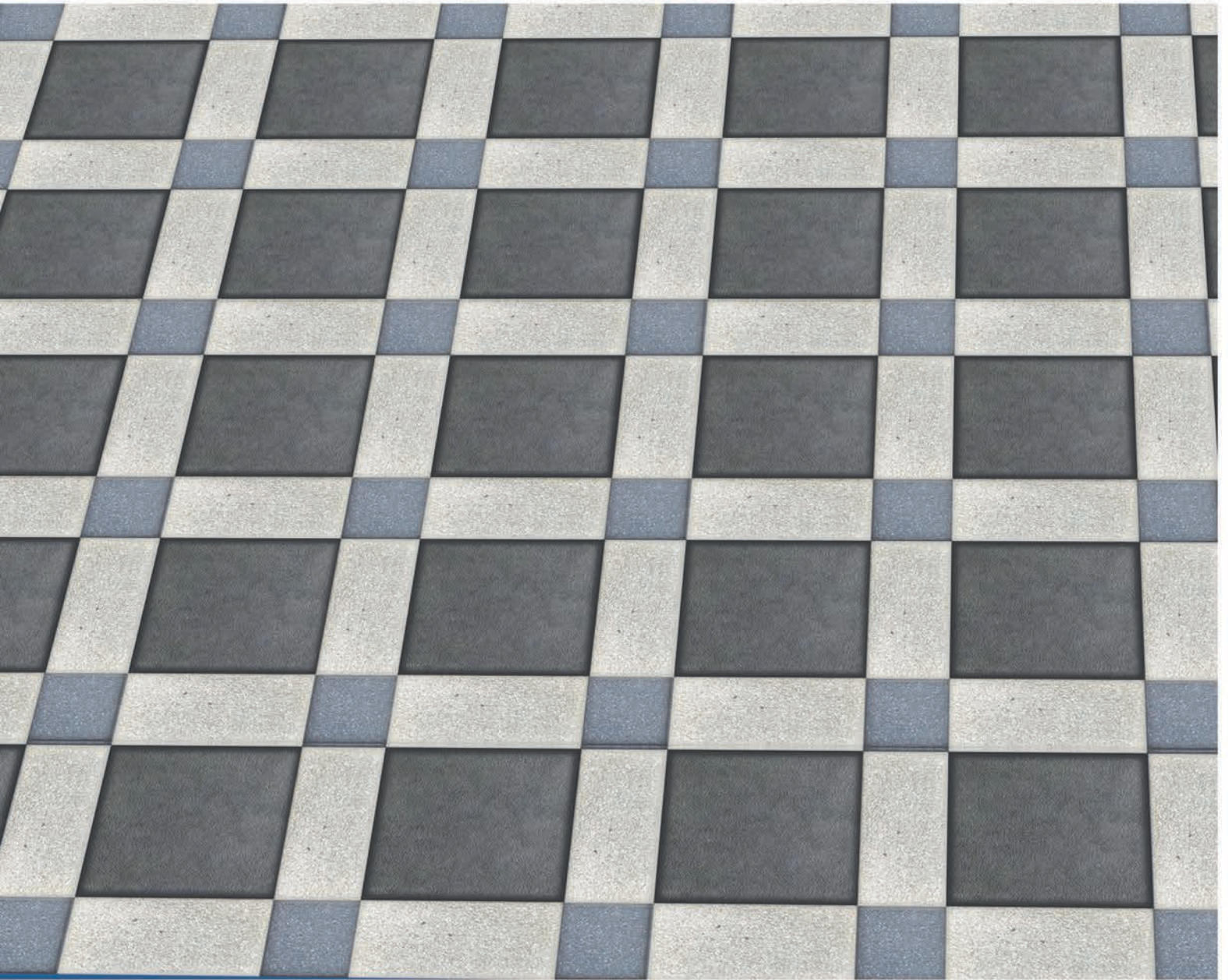
- Pedestrian footways and precincts
- Public & Private Gardens
- Entrances to public buildings
- School Playground
- Swimming pool surrounds
- Surrounds & Approaches to residential and industrial buildings
- Areas surrounding shop and offices
- Any other areas where a durable external surface is required



400x400mm



IS-15658



SHOT BLASTED



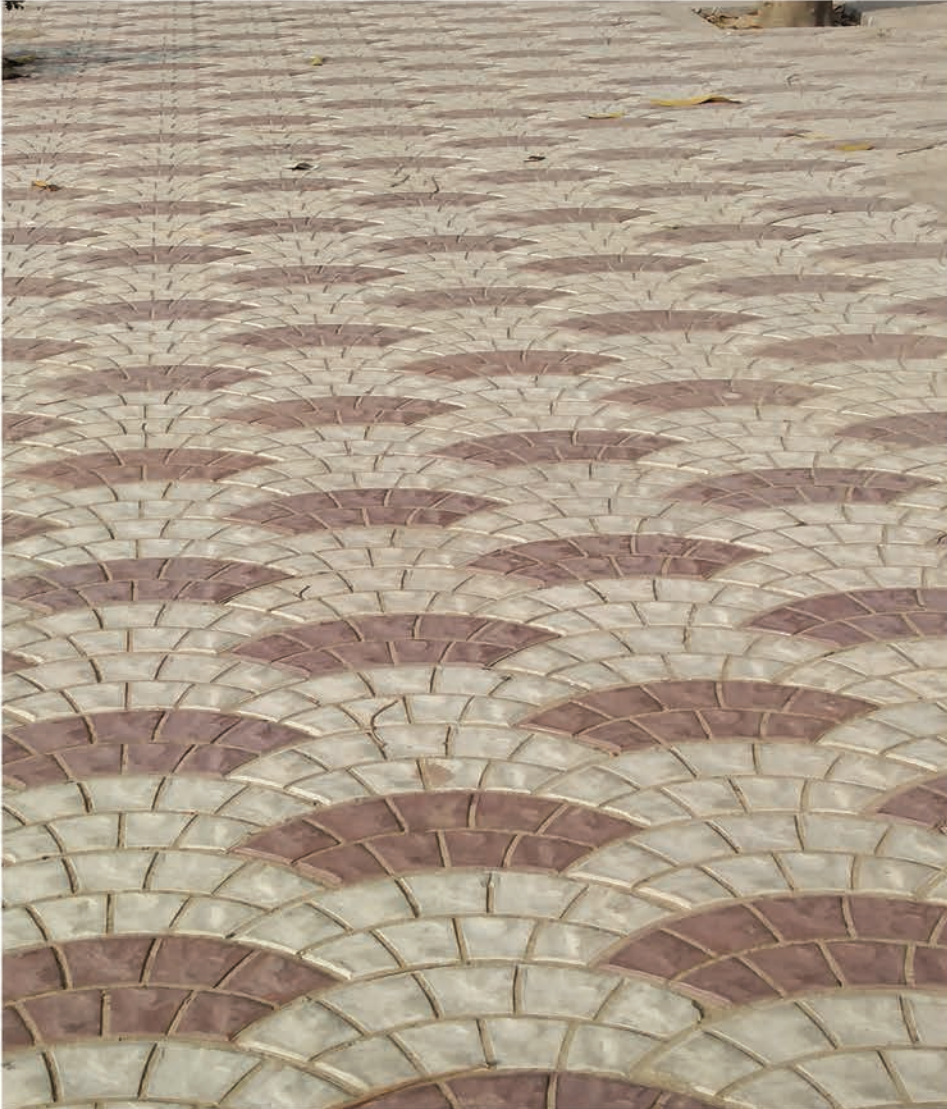
With shot blasted pavers is EAST WEST TILES maintain edge over the competition in quality, supply and variety shot blast helps in efflorescence removal from concrete products.

Available in:

White Chips, Black Chips, Red Chips, Yellow Chips & Salt & Pepper Finish.



FAN COBBLE

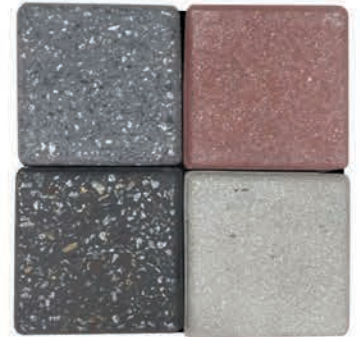


The fan shaped cobble can be used to get interesting fan circular pattern in the paving.



COBBLE SHOT BLASTED

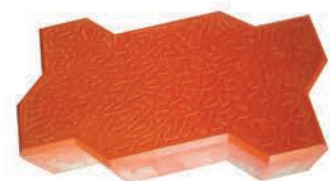
Anti Skid Surface with Elegant Look Like Stone and Aging Texture.



UNI PAVER



Uni paver paving stones are high strength high finish blocks suitable for city streets, industrial complexes, bus terminals, factory floors, service stations, mandi houses, industrial pavements, market roads, airport pavements and roads with high volume traffic.



Uni paver

STONE PAVERS



Stone Pavers are chamfer free, extreme rock like yet controlled stone surface offers itself as a much more aesthetic, yet practical alternative to stones.



Stone Cobble
100x100x60 mm





Stone Square
200x200x60 mm



DAMRU

Application

Shopping Malls,
Residential Project,
Parking Bay,
Railway Platform,
Malls,
Driveways,
Footways.

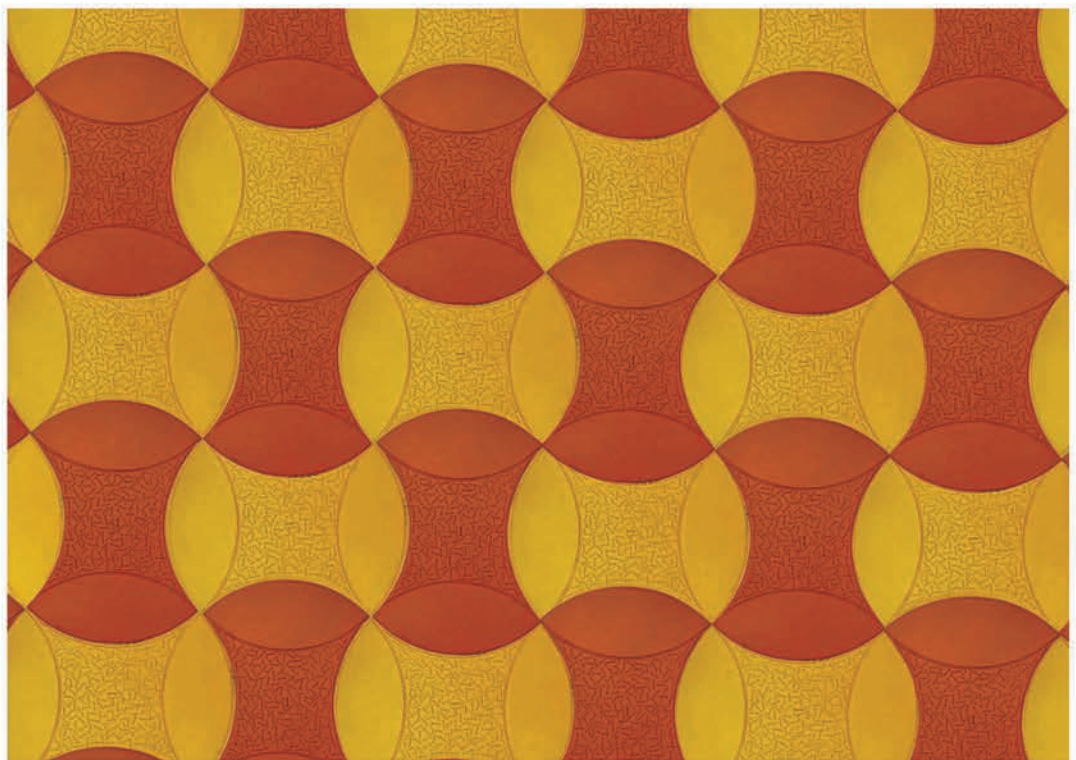


Thickness 40mm, 60mm

DAMRU EYE

Application

Shopping Malls,
Residential Project,
Footways,
Parking Bay,
Railway Platform,
Malls,
Driveways.



Thickness 40mm, 60mm



Thickness 40 mm, 60mm

TRIPLE EYE

Application

Shopping Malls,
Residential Project,
Parking Bay,
Railway Platform,
Malls,
Driveways,
Footways.



Thickness 40mm, 60mm

TRIDENT

Application

Shopping Malls,
Residential Project,
Parking Bay,
Railway Platform,
Malls,
Driveways,
Footways.





400 x 400 x 80mm

GRASS PAVER



Grass Pavers are hollow pavers for the construction of permeable pavement. They are known to effectively prevent soil erosion and to contribute in strong water management efforts.

They are designed to facilitate a perceptible improvement to the amenities and biodiversity in and around the project.



265 x 265 x 80mm



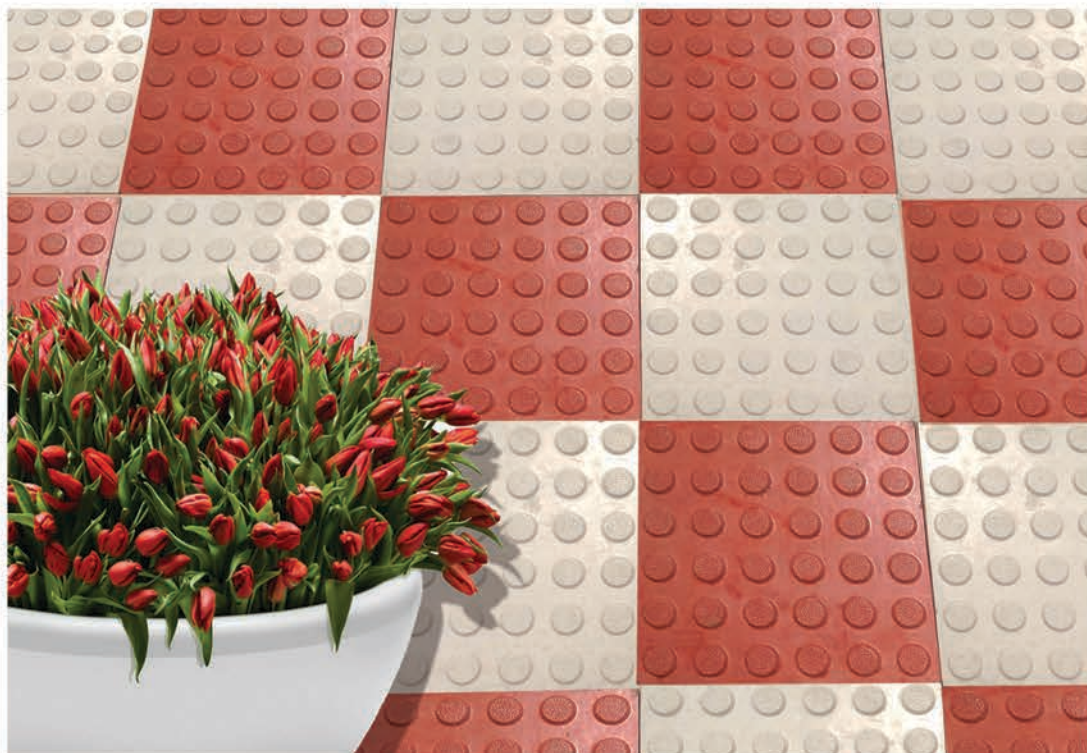
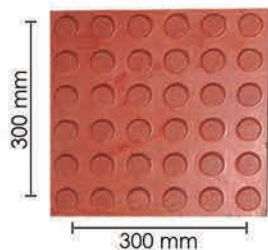
475 x 325 x 70mm

ROUGH WALK

POLKA DOTS

Application

Shopping Malls,
Residential Project,
Parking Bay,
Railway Platform,
Malls,
Driveways,
Footways.

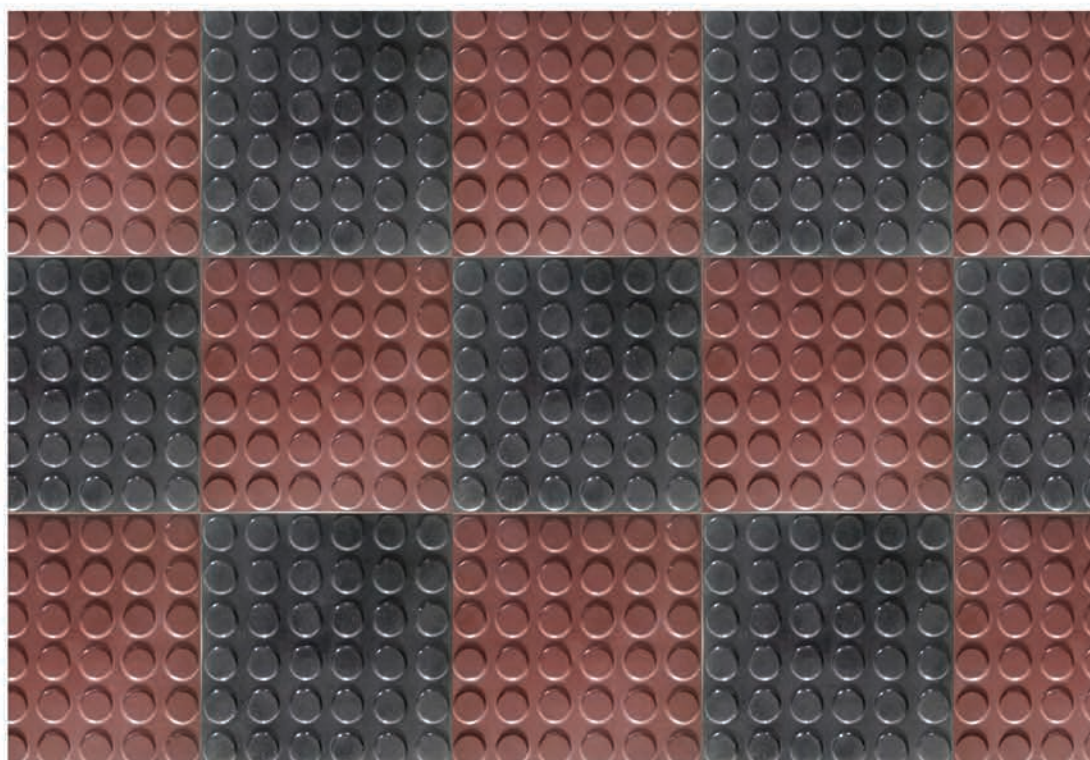
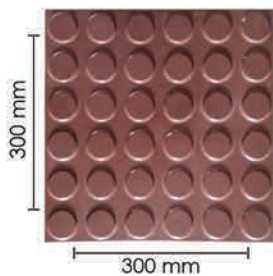


Thickness 25 mm

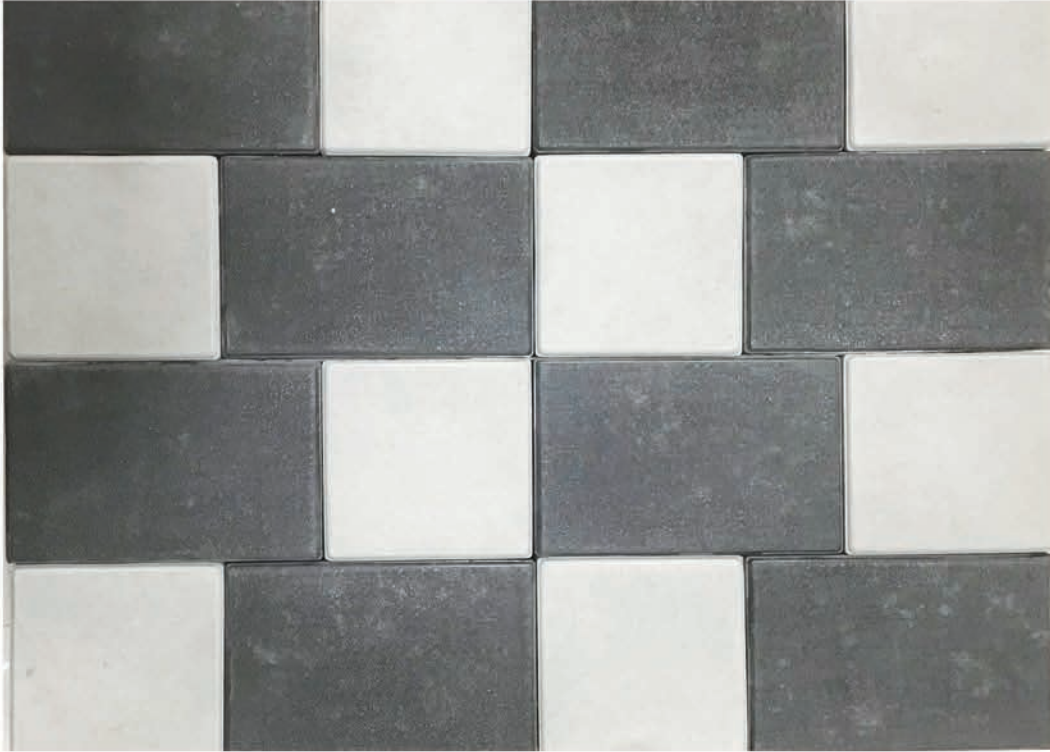
36 COINS

Application

Shopping Malls,
Residential Project,
Parking Bay,
Railway Platform,
Malls,
Driveways,
Footways.



Thickness 25 mm

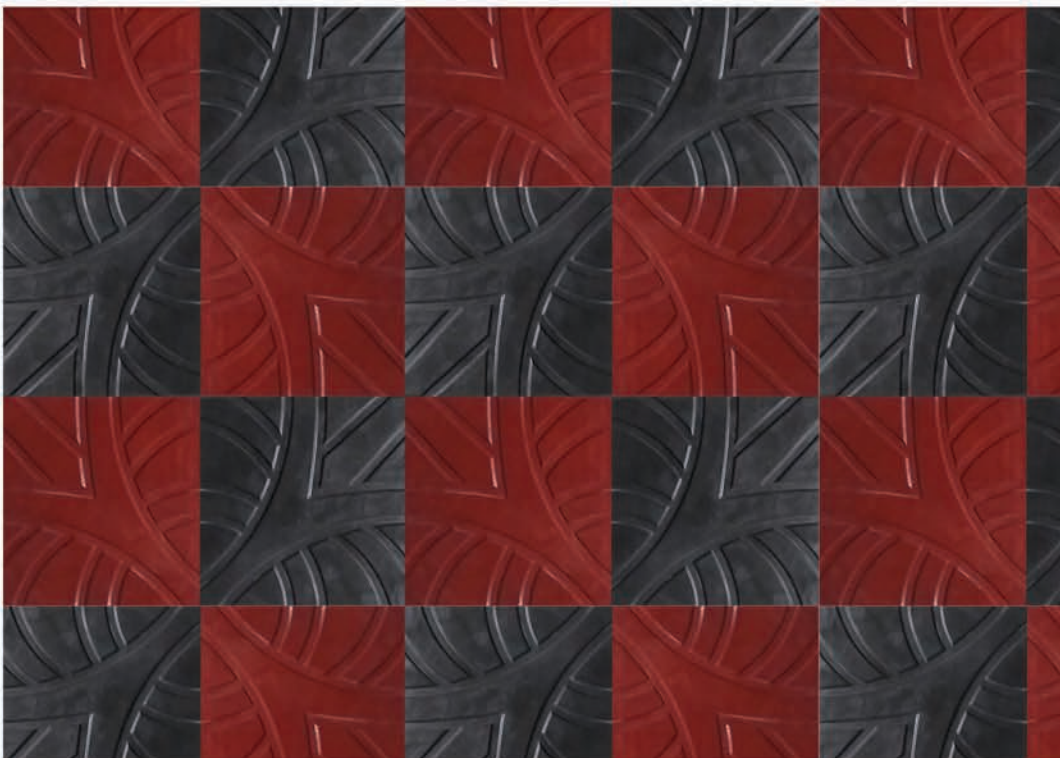
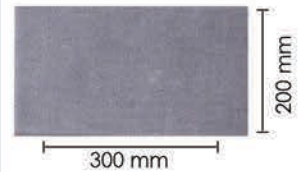


Thickness 25 / 40 / 60 mm

RECTANGLE

Application

Shopping Malls,
Residential Project,
Parking Bay,
Railway Platform,
Malls,
Driveways,
Footways.

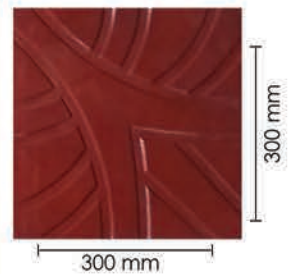


Thickness 25 mm

SOLITAIRE

Application

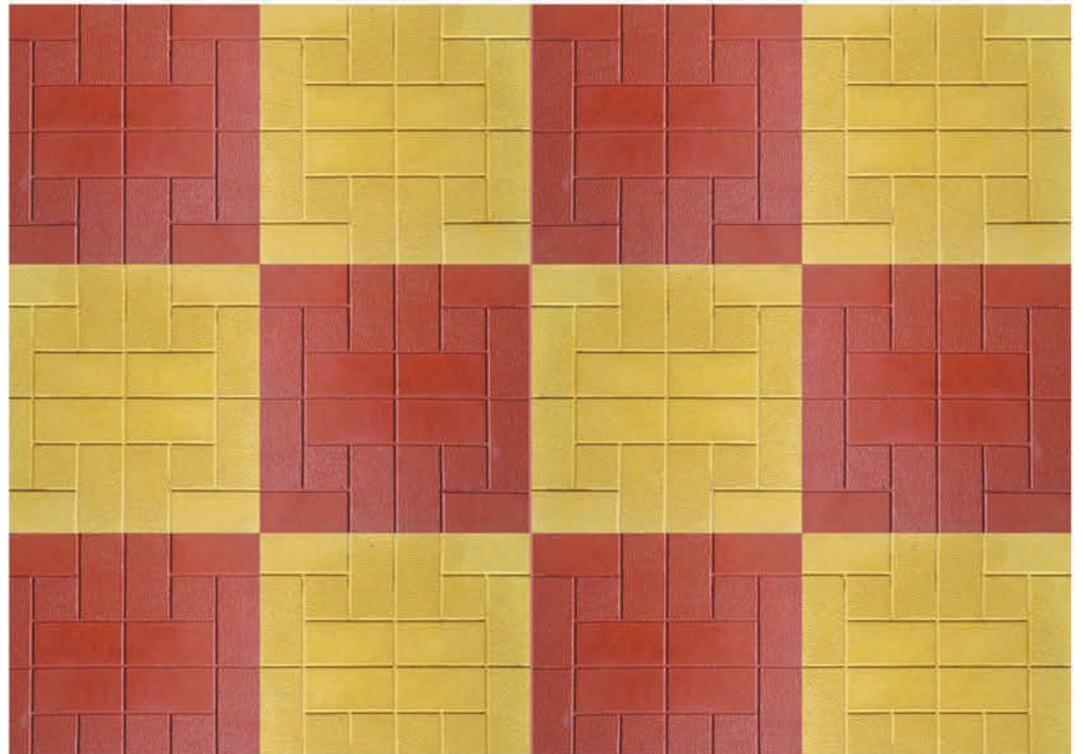
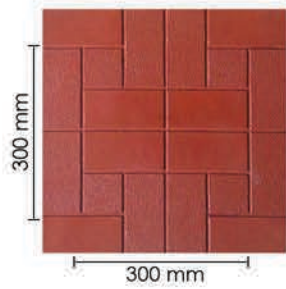
Shopping Malls,
Residential Project,
Parking Bay,
Railway Platform,
Malls,
Driveways,
Footways.



JUPITER

Application

Shopping Malls,
Residential Project,
Parking Bay.

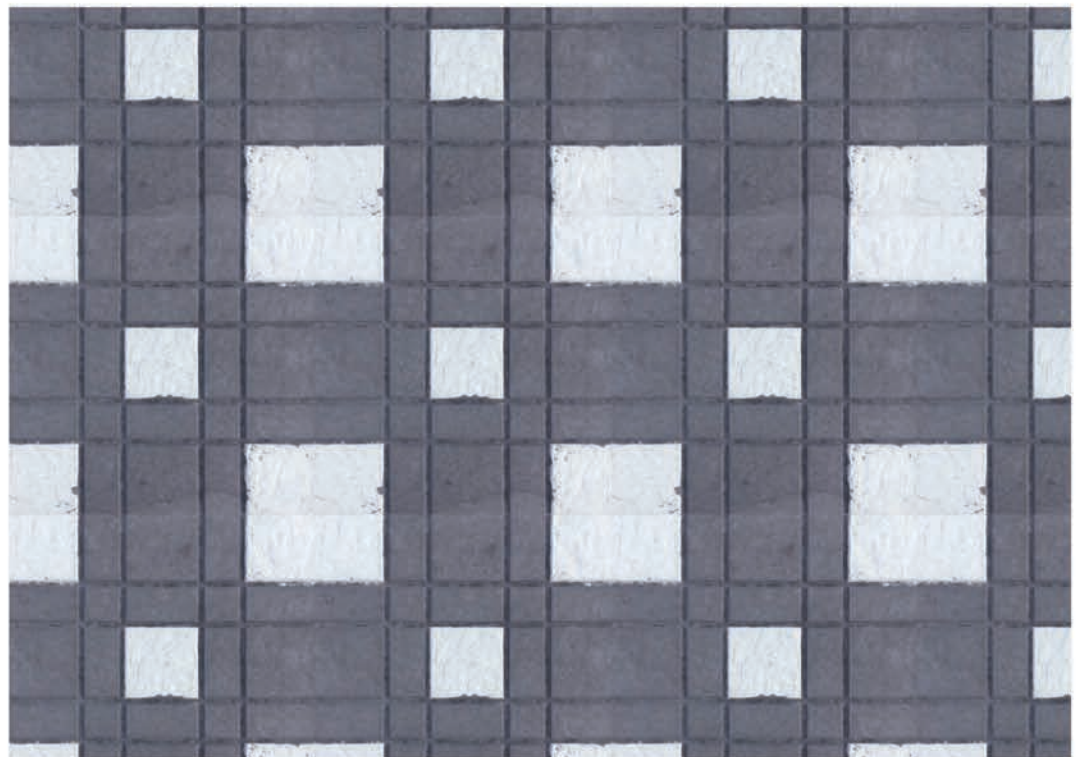
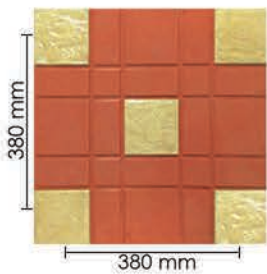


Thickness 25 mm

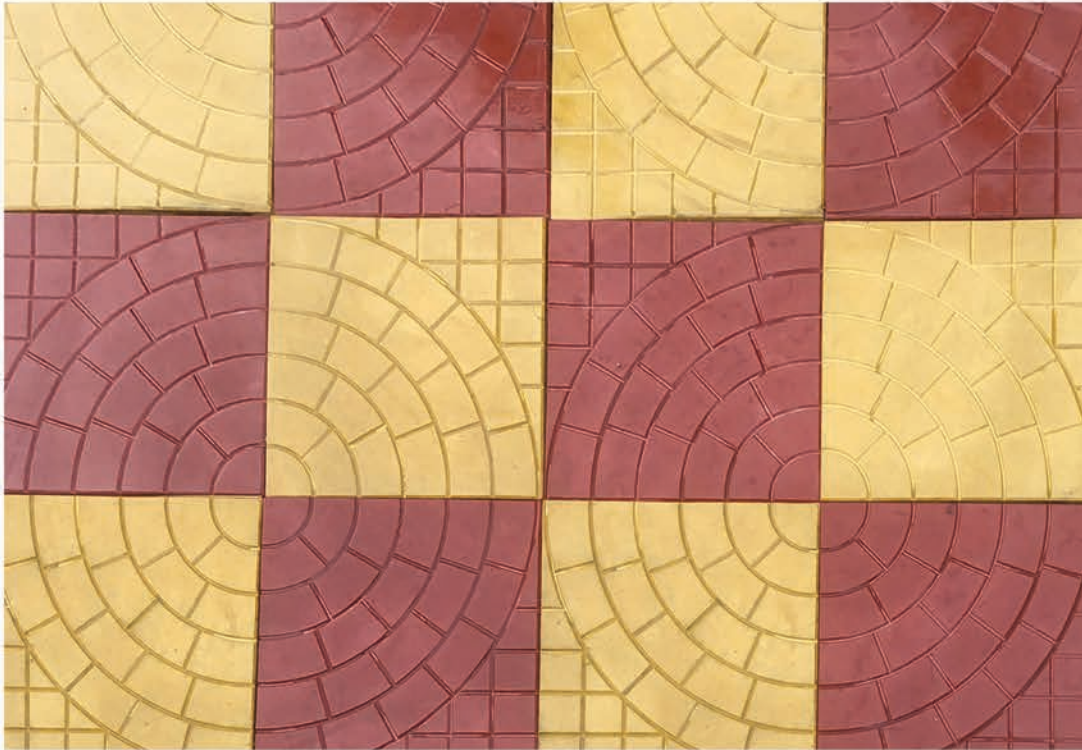
MATRIX

Application

Shopping Malls,
Residential Project,
Parking Bay.



Thickness 25 mm

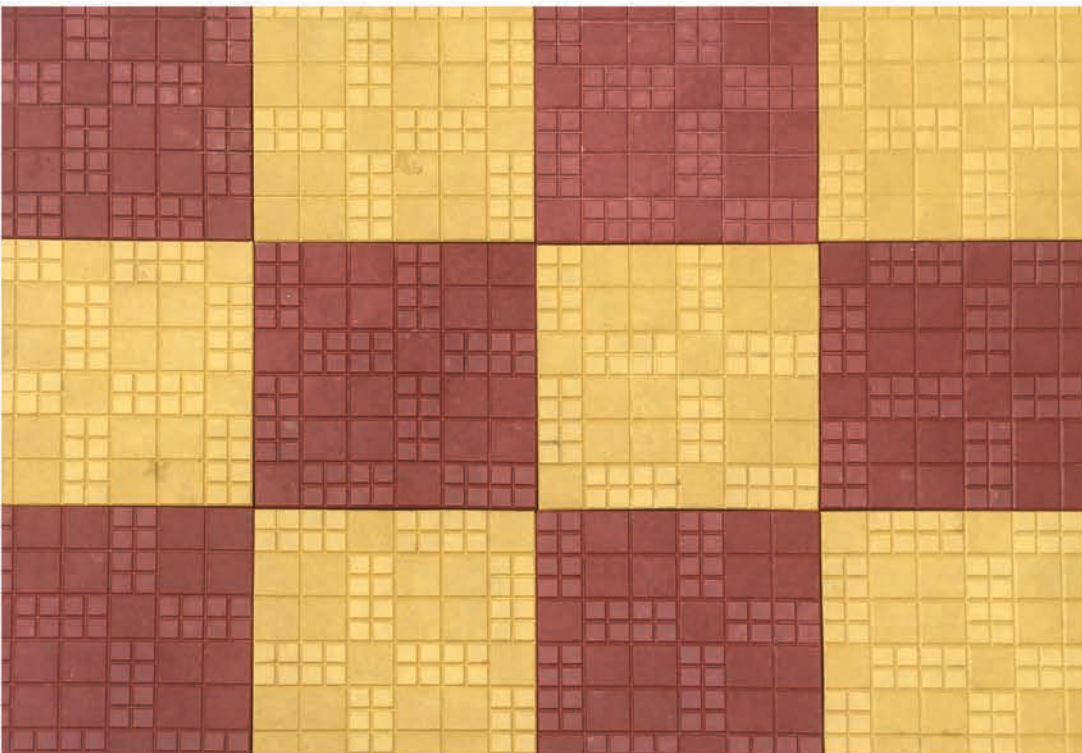
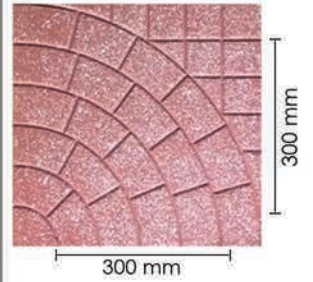


Thickness 25 mm

FLOWER

Application

Shopping Malls,
Residential Project,
Parking Bay,
Railway Platform,
Malls,
Driveways,
Footways.

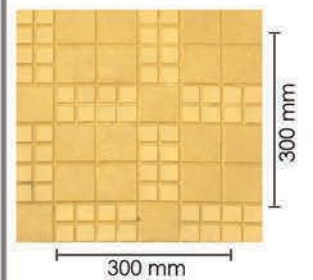


Thickness 25 mm

DOCTOR

Application

Shopping Malls,
Residential Project,
Parking Bay,
Railway Platform,
Malls,
Driveways,
Footways.

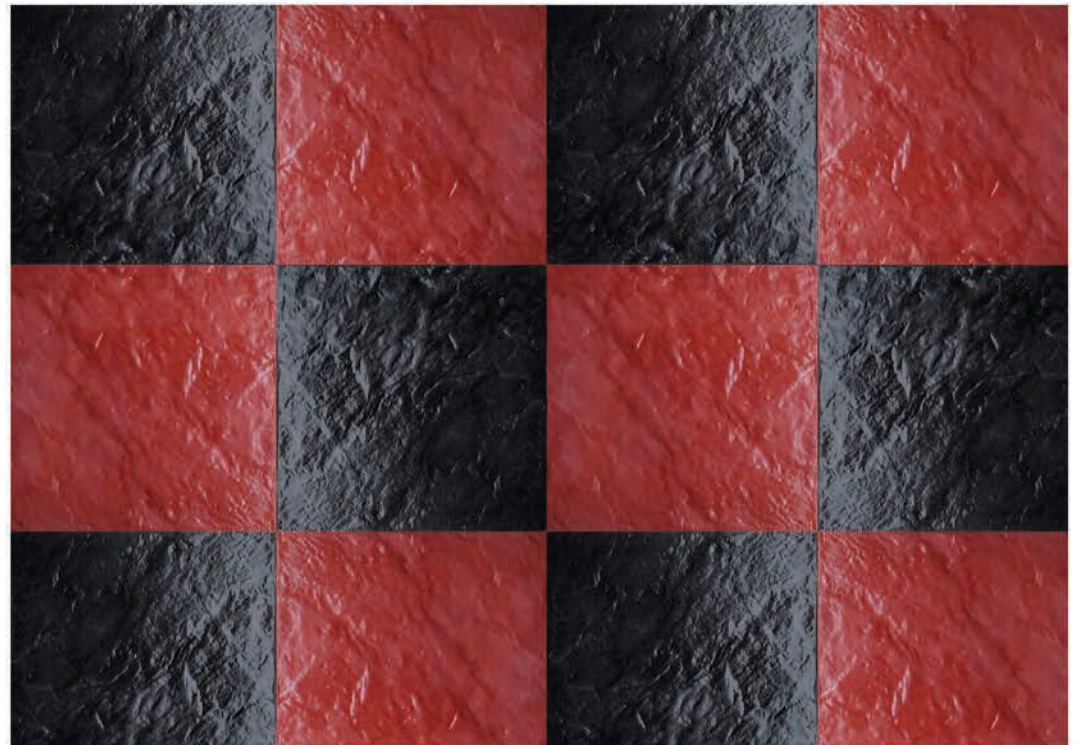
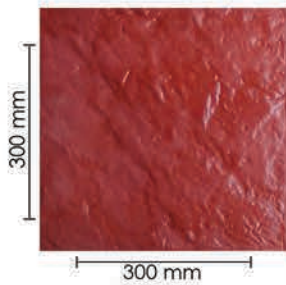


ROUGH WALK

PLUTO

Application

Shopping Malls,
Residential Project,
Parking Bay.

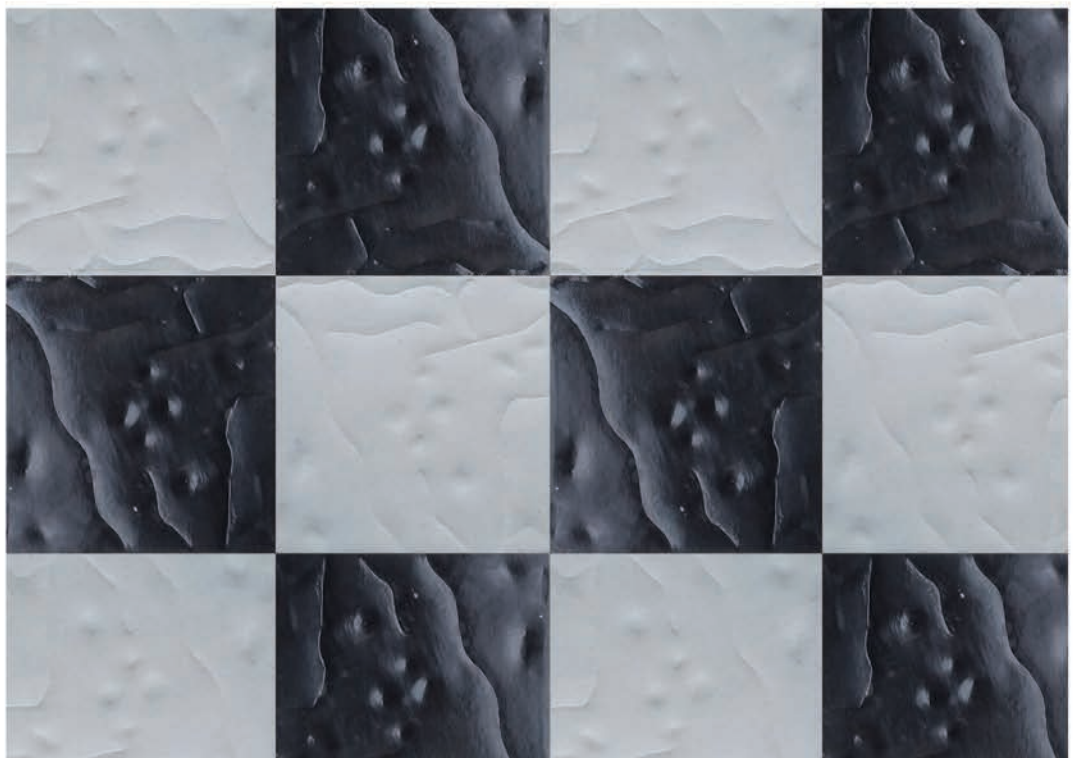
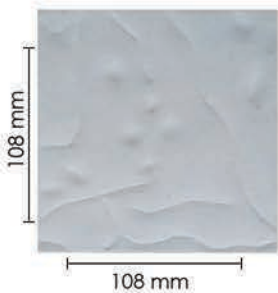


Thickness 30 mm

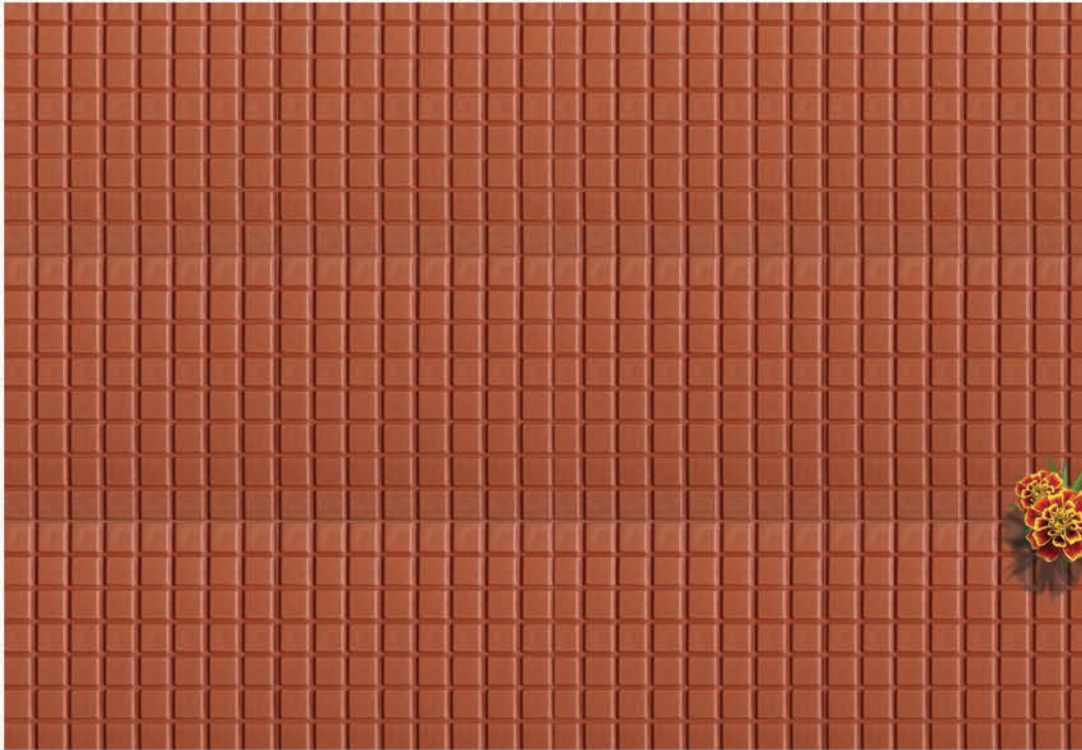
MAXI PAVE

Application

Shopping Malls,
Residential Project,
Parking Bay.



Thickness 16 mm



Thickness 25 mm

CHOCOLATE

Application

Shopping Malls,
Residential Project,
Parking Bay.

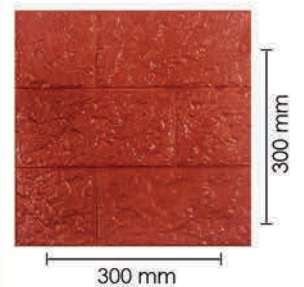


Thickness 25 mm

STONEX

Application

Shopping Malls,
Residential Project,
Parking Bay.

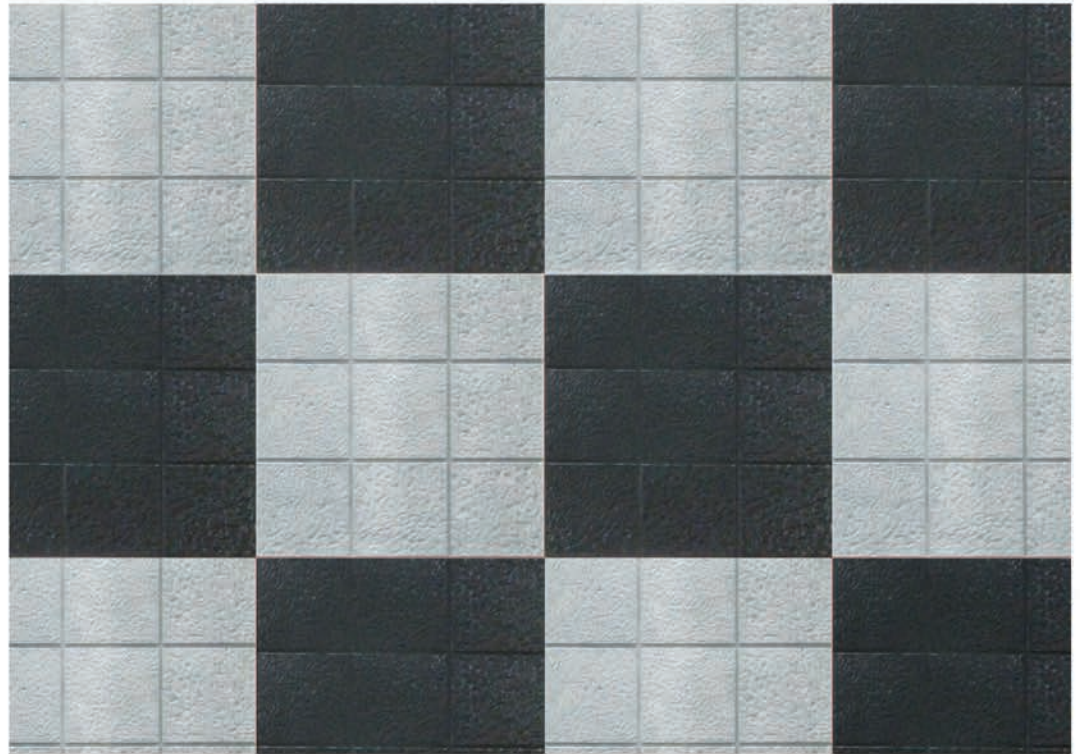
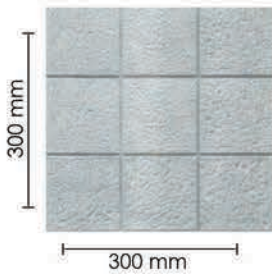


ROUGH WAIK

9 SQUARE

Application

Shopping Malls,
Residential Project,
Parking Bay,
Railway Platform,
Malls,
Driveways,
Footways.



Thickness 25 mm

STEPS & RISER

Application

Staircase of Residential,
Hotels,
Shopping Malls,
Railway,
Stair case.





WALL TILES

Application

Shopping Malls,
Residential Project,
Parking Bay.



Dimension :
300 x 300 mm

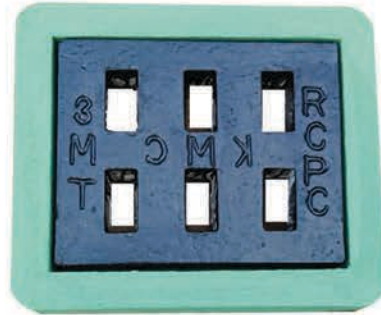
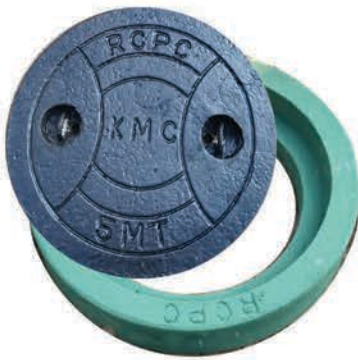
CONCRETE BENCH



Application

Parks,
Shopping Malls,
Railway Platform,
Parking Lot.

MANHOLE & GULLY DRAIN COVER



| CAPACITY | SIZE |
|---------------------|--------------------|
| 1 M TON to 40 M TON | AS PER REQUIREMENT |

KERB STONE



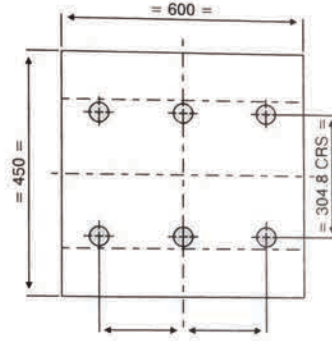
500 x 300 x 150 mm
 300 x 300 x 150 mm
 450 x 300 x 100 mm



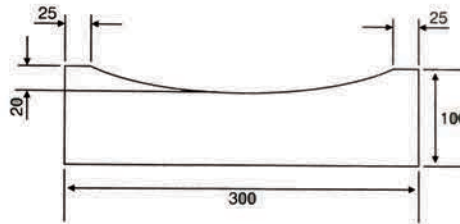
410 x 300 x 150 mm
 450 x 300 x 150 mm



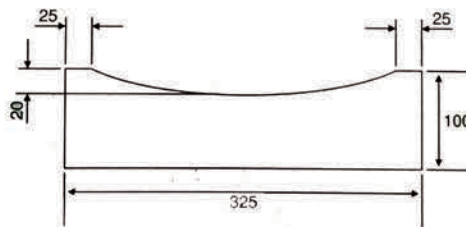
WATER DRAIN SYSTEMS



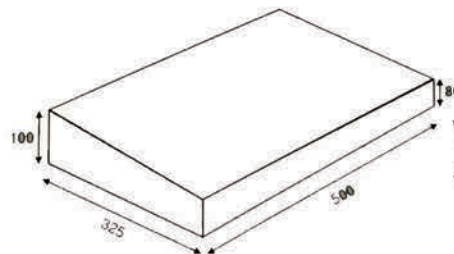
DRAINAGE COVER
WITH PRIMARY REINFORCEMENT
SIZE : 450X600 MM (6 HOLES)
THICKNESS: 80 MM



WATER DISHED CHANNEL
SIZE : 600X300X100 MM

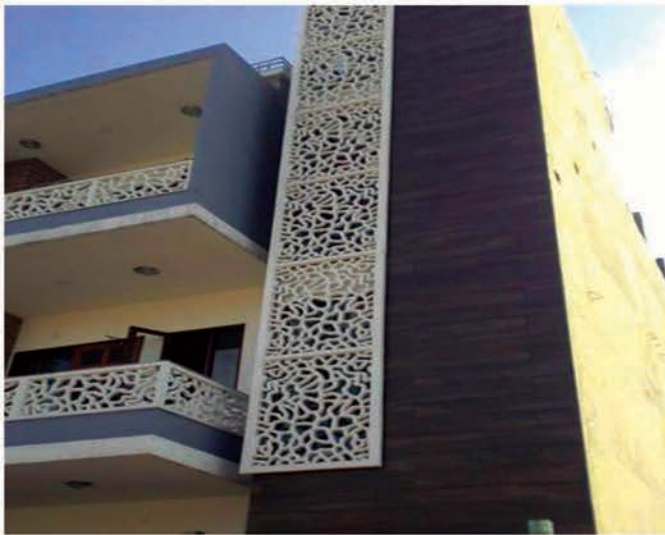


WATER DISHED CHANNEL
SIZE : 500X325X100 MM



WATER DISHED CHANNEL
SIZE : 500X325X80/100 MM

GRC & FRP JALI



SPECIFICATION OF PAVER BLOCKS

AS PER IS 15658 : 2006

A) Pigments used are confirming to IS 44, 1550 all inorganic pigments iron oxides.

B) Recommended Grade of Pavers for different categories.

| Grade of paver | Specified Compressive Strength | Thickness (mm) | Traffic Category | Traffic examples of application |
|----------------|--------------------------------|----------------|---------------------|---|
| M-35 | 35 N/mm ² | 60 | Light-traffic | Shopping complexes, Car parking, Office driveways housing colonies. |
| M-40 | 40 N/mm ² | 80 | Medium-traffic | City streets, Market roads |
| M-50 | 50 N/mm ² | 100 | Heavy-traffic | Bus, Terminals, Industrial Complex, Factory floors. |
| M-55 | 55 N/mm ² | 120 | Very Heavy -traffic | Container Terminals, Ports, Docks, Yards etc. |

C) Recommended dimensions and Tolerance for Paver Blocks

| Dimension | Tolerance Limit <100 mm |
|--------------|-------------------------|
| Width, W | ± 2 mm |
| Length, L | ± 2 mm |
| Thickness, T | ± 3 mm |

| Dimension | Tolerance Limit <100 mm |
|--------------------|-------------------------|
| Aspect ratio L / T | ± 2 mm maximum 4 |
| Chamfer | ± 1 mm |
| Squareness | ± 2 mm |

D) Technical specification of Paver Block as per IS

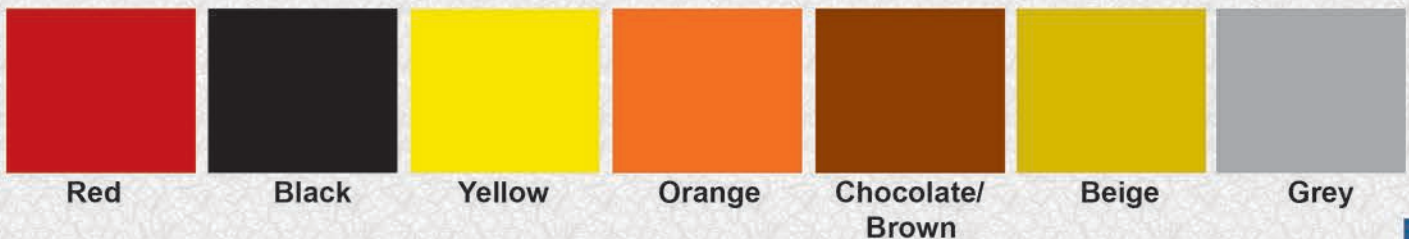
Water absorption - Average of three blocks should not be more than 6% by mass and in individual unit should not be more than 7%.

Compressive strength - Average corrected compressive strength of 28 days should be as per Table (B). Individual corrected compressive strength should be not less than 85% of targeted compressive strength

Abrasion resistance - When tested as per method for determination of abrasion resistance should not be more than 20,000 mm³ per 5,000 mm² in individual & 18,000 mm³, per 5,000 mm² in average.

E) Above specifications are applicable for standard products. Other specifications are also available as per customer requirements.

COLOURS AVAILABLE



INSTALLATION GUIDE PAVERS

The correct installation of your EAST WEST TILES product is vital to the overall appearance of your investment. Your EAST WEST TILES product should not only enhance the look and value of your property but should be practical and long lasting too.

Contractor : We recommend that an experienced contractor installs all EAST WEST TILES products. To achieve the best results from your pavers it is recommended that your base preparation, bedding layer and grouting be specified by a qualified engineer. The paving installation should be done by a paving contractor who is familiar with the installation of products,

If however, EAST WEST TILES you choose to install the product yourself consider the following steps to ensure a successful outcome.

1. Base Preparation

It is critical to the long lasting stability of your paving that the supporting base for your pavers be properly constructed.

The four main aspects of the base preparation are :

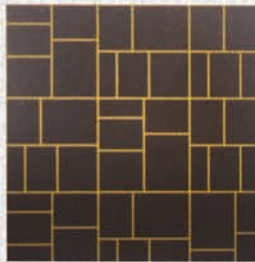
a. Drainage

b. Sub-grade

C. Base-course

d. Bedding course

Popular Laying Options:



- a) Drainage: Good drainage prevents the accumulation of sub-surface water underneath the paved area known as sub-surface ponding.
- The excavated surface should have a fall (minimum 1: 50) so that any moisture will flow to a drainage point.
 - It is recommended that the top of the paving is a minimum of 75 mm below the damp proof course of the building
 - Place a plastic membrane against any exposed foundation.
- b) Sub-grade : The sub-grade is the upper part of the soil, natural or constructed, which support is the loads transmitted by the overlying paving.
- All vegetation and top soil must be removed,
 - Must be well drained and compacted.
- c) Base-course : the base-course is the foundation for the pavers,
- The base course should be made from gravel or G5 and can be stabilized using cement
 - Varies in thickness between 50mm and 120mm depending on.
- the type of sub-grade and whether the paved area is for a footpath or driveway.
- Footpath pavers can be laid without a base-course where the sub-grade material is compact and uniform.
 - The compacted surface should be tight or close knit to prevent migration downwards of the bedding course material.
- d) Bedding Course : The layer that the pavers rest on. Well graded, washed river sand is used as a bedding course material for paving
- Between 20mm and 25mm thick.
 - Carefully screened (level) with a straight edge.
 - Must be moist when the pavers are placed.
 - Cement may be added to the base-course to further stabilize this layer.
- ## 2. Setting out
- Ensuring that your paving pattern stays aligned.
- Use setting out lines (this is a grid of string nylon lines spaced at exact intervals)
 - Constantly re-check your lines in all directions while installing the pavers.

3. Handling of products to minimize damage to pavers during transport.

- Transport in an upright position.
- Carry pavers by hand to the laying area, underside to underside,
- Cobbles should be transported in a wheelbarrow and be packed and unpacked individually by hand.

4. Laying the Pavers EAST WEST TILES products are designed to resemble natural stone and do have variances in dimensions and colour.

- Product must be drawn from different consignments to ensure blending of different batches.
- Uneven pavers should be rotated to match adjoining pavers or replaced and used for cutting.
- Concrete is brittle. Consequently it can be expected that up to 5% of the product will have small chips when delivered. This is normally allowed or by the paver when ordering Chipped products should be used for cutting where possible

5. Cutting if necessary, EAST WEST TILES pavers can be cut:

- With a brick cutting machine or;
- With an angle grinder (with a diamond tipped blade).

6. Edge Restraint Restrain the perimeter of the laid paving to prevent the washing out of the bedding sand (this will cause subsidence of the pavers on the edge and could result in movement of the pavers). Good edge restraints are:

- Reinforced concrete
- Kerb stones
- Edge Pavers embedded in concrete base.

7. Joint Filling : There are two types of paving installations, namely rigid and flexible paving. With the rigid installation method the spaces between the pavers are filled with a wet slurry mix known as grouting. With the flexible installation method dry sand is swept in between the pavers to secure them in place.

Please see details on the joint filling material and their respective installation techniques below:

7a. Grouting for a Rigid Installation Products are porous and must do thoroughly wet prior to the application of the slurry to avoid cement staining.

- A 1:3 Cement / plaster Sand slurry mix is strongly recommended.
- When a slurry is used, ensure that excess grouting is washed of the textured surface with a fine hose spray, or with a sponge immediately.
- Rinse sponge frequently in clean water. Any residue will result in cement staining.
- Freshly grouted pavers should not be trafficked.
- Cordoning off the new paving for 7 days, with no pedestrian or vehicle traffic, is recommended.
- Cure the grouting by wetting the paving and joints with a fine spray for a few days after grouting. Keeping the grouting moist will prevent cracks. Beware not to wash the grouting out.

7b. Jointing Sand for a Flexible Installation Alternatively, fine plaster sand or building sand may be used to fill the joints between cobbles and pavers in driveway applications.

8. Compaction of Paving : It is recommended that newly laid pavers be compacted by:

- A light roller compactor with the vibrator switched off. This is the method used for cobbles and pavers.
- A rubber mallet. This is the method used for flagstones.

THE EASY WAY TO LAY EAST WEST TILES PAVER BLOCKS



Prepare Sub-base



Fix Kerbstones on the Sides of Paving Area



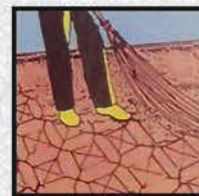
Evenly Spread the Layer of Sand over the Sub-base



Lay and Interlock Paver Blocks



Vibrate the Laid Surface with fine River Sand

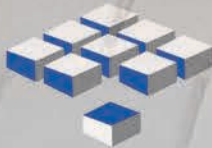


Remove Excess Sand

“Quality is remembered long after the price is forgotten”



smenindiasolution.com



EAST WEST TILES[®]
blocks which stand out

Registered Office :

57, Block 'D' New Alipur, Kolkata -700 053,
Contact No. : 9830746691 / 9883805055 / 8017258577
E-mail : eastwesttiles@gmail.com

Concrete Blocks | Pavers | Flagstones | Cobbles | Tiles | Grass pavers | Kerb Stones